



DELIVERING
EXCELLENCE



OUR STORY

Following the success milestones of its founders in projects across Europe and the GCC for more than 23 years, Smart Green Solutions (SGS) was founded in Lebanon in 2016 by electromechanical professionals with thorough knowledge and experience.

Taking great pride in the trust bestowed upon us for providing top notch electro-mechanical designs and solutions, our clients benefit directly from the company's full range of expertise and international reach.

SGS boasts a team of highly skilled professionals committed to staying permanently abreast with cutting edge technology, hence enabling the company to undertake projects of diverse proportions and complete them over tight timeframes.

Letter by The Founder

Founded in 2016, SGS stands as a testament to an unwavering passion for engineering excellence, coupled with years of invaluable knowledge and experience in design, execution, finance, and management. With a strong foothold in the electro-mechanical and renewable energy fields, we have established ourselves as a trusted leader in delivering innovative and sustainable solutions.

I dedicated over two decades of relentless pursuit in acquiring expertise and honing skills in the most challenging environments. Through perseverance and determination, I successfully managed and nurtured numerous engineering and contracting missions, consistently driving growth and achieving remarkable results.

Drawing upon this wealth of experience, SGS was born - a realization of my lifelong dream to establish a company that embodies the highest standards of professionalism, technical proficiency, and client satisfaction. Since its inception, SGS has been at the forefront of cutting-edge engineering solutions, delivering projects that surpass expectations and leave a lasting impact.

As we look to the future, SGS remains dedicated to pushing boundaries, embracing emerging technologies, and spearheading innovation. We strive to be at the forefront of engineering advancements, continually expanding our expertise and capabilities to meet the evolving needs of our clients and the industry as a whole.

Join us on our journey towards engineering excellence, where passion, experience, and sustainability converge to shape a better world.



Team





Our Vision & Mission

Combining global knowledge of the highest technology and standards with world-class experience and acute local market awareness, our team of professionals strives to improve clients' daily life through science, engineering and technology.

With the same tools we aim to transform our community into a smart and green based culture, contributing to a better quality of life today and tomorrow.

Our Expertise

From top-notch electromechanical services to luxury high-tech solutions and varied turnkey projects, our team accompanies the client in every phase, ensuring the provision of value engineering, pre-sales consultancy, supervision, and long-term aftersales follow-up and support.

When it comes to high-tech projects, high quality implementation is carried out with utmost precision within tight timeframes. Experts at SGS and its sister companies in the nation and abroad, walk the client through all relevant project details and requirements, simulate all possible solutions, and recommend the best combination of efficiency, cost-effectiveness, comfort, and luxury that best caters to the client's particular needs.



Our Services

Investing our extended global reach, varied capabilities, and high-quality standards into our daily work enables us to offer a unique, yet comprehensive, range of services. This provides SGS with its primary competitive edge: clients' trust. Environmental awareness is naturally embedded in every provided service.



Design & Engineering

SGS provides the full spectrum of advanced engineering services in line with latest standards. Specialized in the electro-mechanical field, SGS offers quality engineering services throughout all project phases:

- Design, calculation and full study of all electro-mechanical systems for building or infrastructure.
- Tender documents including BOQ and specifications.
- Coordinated Shop drawings ready for sites execution.
- Material / equipment selection and sizing.
- Evaluation of existing design or construction.
- MEP systems verification and troubleshooting.
- Value engineering and cost optimization.
- As built and OPM's.
- Project supervision and management.



MEP Contracting

Complete, collaborative end-to-end services including management, contract implementation, procurement, installations, commissioning and hand-over. Our engineers and technicians are highly trained to render quality installations that adhere to set codes and standards.



Trading & After Sales

A wide range of premium quality technologies is offered within a framework of integrated, innovative, professional, and reliable pre-sales and long-term aftersales support. This ensures meeting clients' expectations in all technology arenas.



Maintenance

SGS qualified technicians handle simple and complex maintenance procedures. While preventive maintenance involves periodic maintenance services and required changes of elements under contract, intervention maintenance is similarly carried out by our specialist team with utmost effectiveness and precision.



Facility / Building Management

Through sharing your priority of preserving property value, we ensure providing comprehensive, top-of-the-line property management services including administration, financial, technical, renovation and energy management systems among others.





Fields of Expertise

SGS has capitalized on its extensive expertise and unremitting innovation policy to become a leader in the electro-mechanical fields and renewable energy sector. Based on the platform of making life easier through inventions and innovations, SGS solutions are in line with the latest international technologies.

01

Mechanical Engineering:

- Heating, Ventilation and Air-conditioning
- Chilled water plants
- Hot water boiler plants
- Domestic Water systems
- Steam Systems
- Fire Fighting systems
- Clean rooms
- Kitchen extract systems
- Compressed air systems
- Laboratory ventilation and air conditioning
- Medical gases
- Booster pumping stations
- Irrigation systems
- Waste and water treatment plants
- Swimming pools & fountains
- Chemical disinfection

02

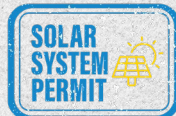
Electrical Engineering:

- Electric Power and lighting systems
- IT & data networking systems
- UPS Systems
- Fire Alarm & Detection systems
- Smoke Management systems
- Gas suppression systems
- Access control & security systems
- Building / Facility Management Systems
- EMS (Environmental Monitoring Systems)
- CCTV systems
- Earthing and lightning protection systems
- Smart homes and automation systems

03

Renewable Energy and Sustainability Engineering:

- Thermal Hot Water Solar Systems
- Photovoltaic Off Grid / On Grid / Hybrid solar systems
- Permit application and follow-up at the Ministries of Energy and Water and Interior
- Preparation and submission of net metering files ...



Special Products by SGS

SMART AND GREEN LED Lighting

SGS is the exclusive agent for the French-based global company Smart & Green, a leading developer and manufacturer of cordless LED light bulb technology that can be used both indoor and outdoor, controlled via Bluetooth. You can now personalize your lighting to suit your needs. Smart & Green technology is designed with intelligence, practicality, and simplicity, and utmost convenience.



WULIAN – NANJING IOT SENSORS

SGS places Wulian, the leader in smart home industry worldwide, within your immediate reach. Wulian is renowned for advanced R&D and comprehensive product categories. Its wireless solutions include energy efficient lighting, security, home appliances management, environmental detection and much more. This enables the smooth transformation of your home into a smart and secure space without undergoing disturbing procedures such as drilling or breaking any walls, adding panel boards, extending cables, or installing wires.



Executed Projects | KSA



AMMARIYA PALACE



BAY LA SUN



KING ABDULLAH FINANCIAL DISTRICT

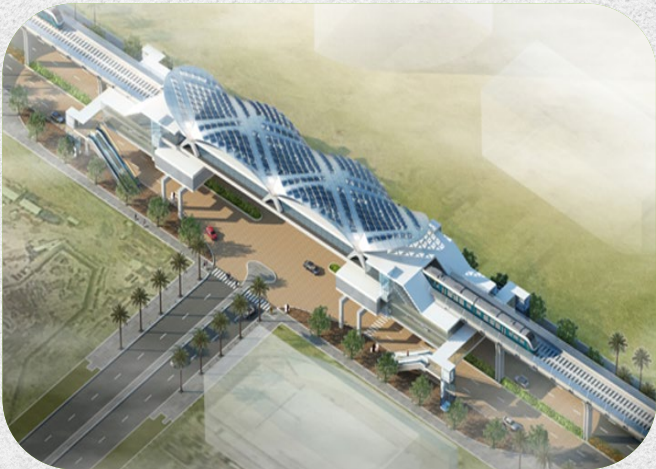


KING ABDULLAH FINANCIAL DISTRICT

Executed Projects | KSA



RIYADH METRO



RIYADH METRO



RIYADH METRO



RIYADH METRO

Executed Projects | KSA



KING ABDULLAH FINANCIAL DISTRICT



KING ABDULLAH FINANCIAL DISTRICT

Executed Projects | KSA



MADARAT



PENSION FUND



RHTC

Executed Projects | KSA



MINISTRY OF FINANCE



PRINCESS NOURA UNIVERSITY

RIYADH METRO | KSA

Description; Metro Stations, Labor Camps, Main Kitchen, underground utilities

Location; Riyadh

Scope of Work;

Design and fabrication of 500 heavy-duty drinking water systems and mobile toilets that served the diversified locations, stations, underground utilities and camps

Periodic chemical treatment for all potable water systems deployed in all the project locations

Maintenance for all supplied systems

Design, supply and installation of the main kitchen serving the project

Area; Our operation on this project stretched over several lines covering hundreds of kilometers with more than 200 points of operation and service

Client; BACS CONCORDIUM (BECHTEL ALMABANI CCC SIEMENS)



RIYADH METRO | KSA



AMMARIYA PALACE | KSA

Description; Palaces and annex facilities

Location; Riyadh

Scope of Work; HVAC and Plumbing

Area; 150,000 sqm

Client; Wahat El Omran



KING ABDULLAH ECONOMIC CITY - BAY LA SUN | KSA

Description; Residential and commercial complex complete with all related facilities and services

Location; Rabigh

Scope of Work; HVAC, Firefighting, Plumbing, High Current, Low Current, BMS, Swimming Pools and Irrigation

Area 200,000 sqm

Client EMAAR

Consultant SAK



MERIDIEN | KSA

Description; Five Star Hotels. Consisting of 8 independent towers, each tower 22 floors, with a total of 2385 apartments

Location; Makkah

Scope of Work; Plumbing, High Current and Low Current

Client; Saudi Amjad Holding

Consultant; PROJACS



MOF - Al Nakheel | KSA

Description; Offices & Facilities

Location; RIYADH

Scope of Work A 5000 Tons of refrigeration serving 42 buildings which included 120 AHU s, 1600 VAVs, 13 Chillers, 88 Pumps, 400 Fans, 70 DX units, 250 FCU s, 27 Ice Storage Tanks, 3 Heat Exchangers, 50 Km glycol and chilled water network

Client; Ministry of Finances

Consultant; Dar El Riyadh



MOF - Al Nakheel | KSA



TAFA | KSA

Description; Palaces and annex facilities

Location; Riyadh

Scope of Work; HVAC

Area; 50,000 sqm

Consultant; Rasheed Engineering / ARCADIS (FRANCE)



PRINCESS NOURA UNIVERSITY | KSA

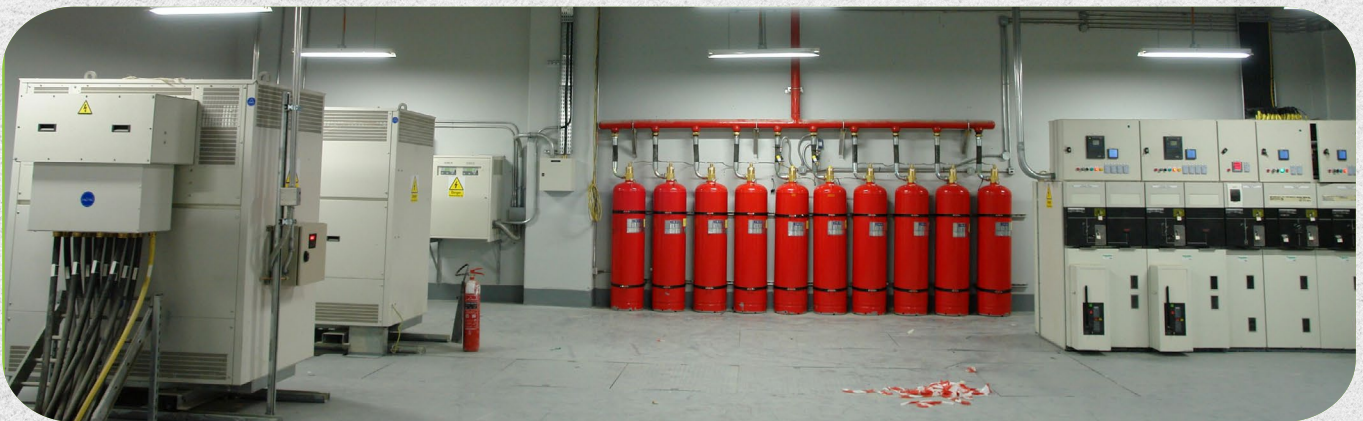
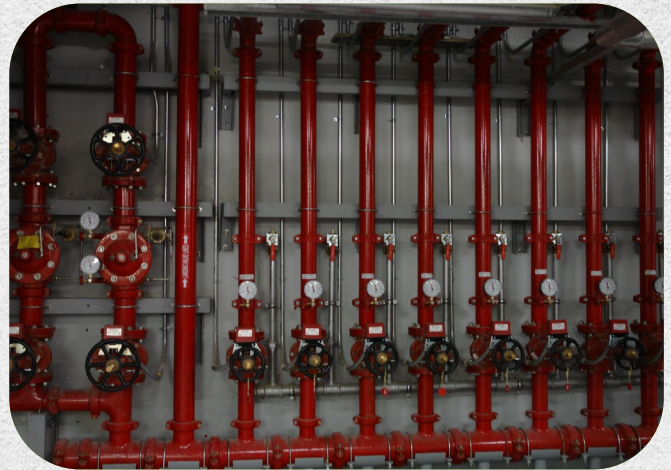
Description; University, Faculty of Medicine and Faculty of Nursing

Location; Riyadh

Scope of Work; HVAC, Plumbing, Firefighting, Medical Gas, High Current and Low Current

Area; 150,000 sqm

Consultant; Dar Al Handasa



PRINCESS NOURA UNIVERSITY | KSA





YAMAMA | KSA

Description; Palaces and annex Offices

Location; Riyadh

Scope of Work; HVAC, Plumbing, High Current and Low Current

Area; 50,000 sqm

Consultant; Al Rasheed Engineering ARCADIS, FRANCE



Some of our Projects | LEBANON

In the next pages, SGS will showcase some of its diverse range of MEP and renewable energy projects designed and executed in Lebanon. With a commitment to sustainability and energy efficient systems, we have successfully executed several projects, including solar photovoltaic and thermal systems, floor heating, HVAC and smart home systems.

Our team's expertise and attention to every detail guarantees that each project is executed to the highest standards, delivering optimal results and customer satisfaction.



Some of our Projects | LEBANON



Some of our Projects | LEBANON



Some of our Projects | LEBANON



Some of our Projects | LEBANON



Some of our Projects | LEBANON



Some of our Projects | LEBANON



Some of our Projects | LEBANON



REFERENCE ENGINEERING AND DESIGN PROJECTS

- Lebanese American University (LAU), Library and Administration Buildings (Byblos, Lebanon).
- American University of Beirut (AUB)- Administrative (Salloum) Building (Beirut, Lebanon).
- Lebanese University, Industrial Research Institute (Hadath, Lebanon).
- Signature Residential Bldg. (Beirut, Lebanon).
- White Residential Bldg. (Beirut, Lebanon).
- Ahlam Development (Kfardebian, Lebanon).
- Marina Towers (Beirut, Lebanon).
- Arwan Pharmaceutical Plant (Jadra, Lebanon).
- Penicilin (Damascus, Syria).
- Mussafah Gardens, Electrical Infrastructure works (Abu Dhabi, UAE).
- Shams Tower (Abu Dhabi, UAE).
- Danet Development- Shoug Tower (Abu Dhabi, UAE).
- Water Edge Tower (Dubai, UAE).
- Burjsideblvd Tower (Dubai, UAE).
- Business Bay Towers (Dubai, UAE).
- Golden and Silver Towers (Dubai, UAE).
- Porsche Design Tower (Dubai, UAE).
- King Abdel Aziz University (KAUST, KSA).
- Musallah Of Jabal Omar Development (Makkah, KSA).
- Royal Saudi Air Force, The Hawk T165-, King Faisal Air Force Base (Tabuk, KSA).
- Royal Saudi Naval Force, Technical Institute Of Naval Studies Facilities, Upgrade Works (Dammam, KSA).

REFERENCE ENGINEERING AND DESIGN PROJECTS

- Gosi Olaya Twin Towers (Riyadh, KSA).
- King Abdullah Economic city (KAEC), Residential towers (Jeddah, KSA).
- Tabuk Pharmaceutical Plant (Dammam, KSA).
- DOCTORS (Jedah, KSA).
- Le Meridian Hotel (Mecca, KSA).
- Saudi Oger Park (Riyadh, KSA).
- Prince Noura University for Women (PNUW) medicine and dental collages (Riyadh, KSA).
- King Abdullah Financial District (KAFD) Hotel and Office building (Riyadh, KSA).
- Avico (Amman, Jordan).
- Al Basra Sports City Hotel (Basra, Iraq)
- Ras Laffan Water Pipeline Project (Ras Laffan, Qatar)
- Faculté de Médecine (FDM) (Alger, Algeria).
- Centre de Développement des Technologies Avancées (CDTA) (Alger, Algeria).
- Forum El Djazair Sidi Fridj Alger Complex (Hotel, Apart Hotel, Villas, Residential Towers and Mall) (Alger, Algeria).
- NOVO NORDISK, Pharmaceutical Oral Solid Forms Production Factory (Tizi Ouzou, Algeria).
- Siege de l'agence Cyber Parc (Alger, Algeria).
- Immeuble Multi Locataire, Commercial Center - Cyber Parc (Alger, Algeria).
- Algidoc Pharmaceutical (Alger, Algeria).
- Ministry of Finance (Abidjan, Ivory Coast).
- Centre Commercial des milles maquis (Abidjan, Ivory Coast).
- SFP Administrative Building (Benin, Cotonou).

The background of the entire page is a grayscale image of architectural blueprints. In the foreground, several large rolls of paper are unrolled, showing detailed floor plans with various rooms, corridors, and structural lines. The blueprints are spread out on a surface, creating a sense of depth and technical precision. The lighting is soft, highlighting the texture of the paper and the intricate details of the drawings.

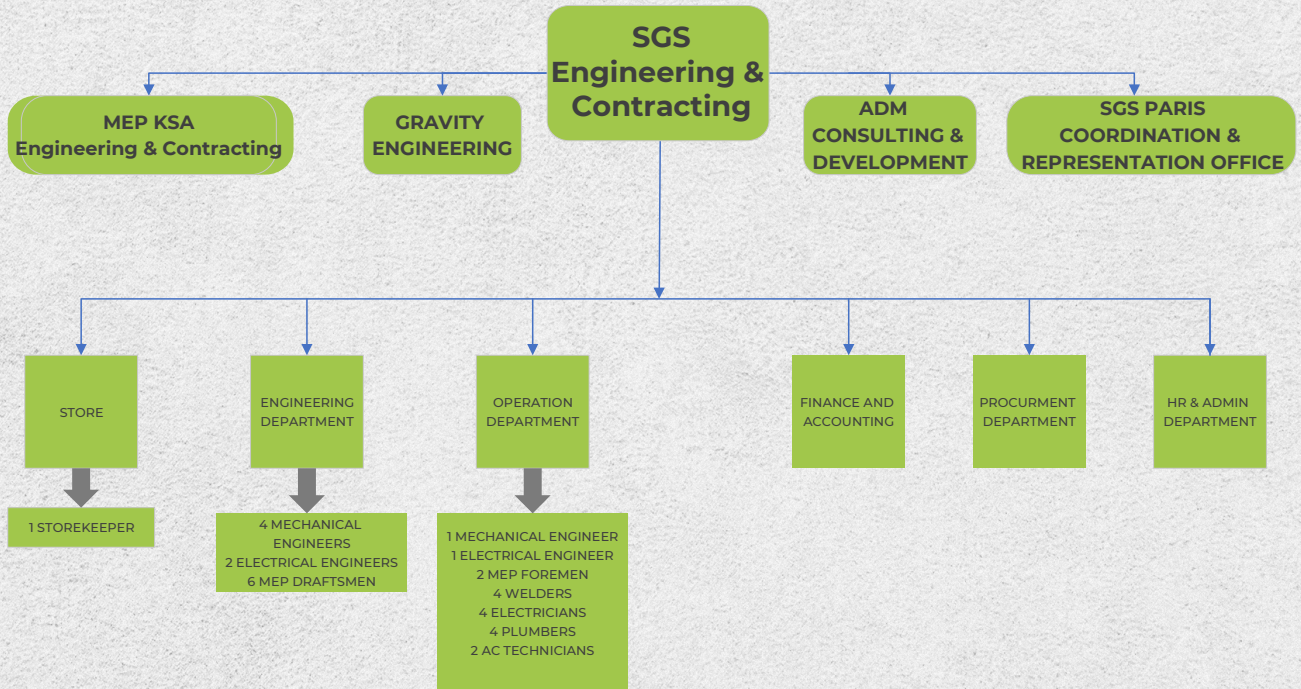
SGS Strategic Deployment

SGS always possessed an ambition goal: to expand both nationally and globally. SGS family of companies includes both local and international sister companies that operate together in synergy to ensure the best quality for our clients.

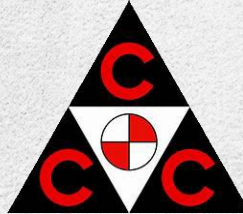
In addition to its headquarters and offices in Lebanon, SGS established a representation office in Paris, France. The main role of this office is to provide all technical and commercial coordination and support with the European suppliers and clients.

Furthermore, and as a part of a constant endeavor to enhance the quality of services rendered to clients, SGS has adopted local and international strategic partnerships enabling it to optimize the performance of technical teams, while allowing it to cover a wide spectrum of areas and projects. Among those partnerships are ADM consulting group for Engineering and Development, MEP Engineering and Contracting, Gravity Engineering, Solaris and many others.

Organizational Chart



Partners & Clients



SOLARIS



SIEMENS

PPX
PETITDIDIERPRIoux
ARCHITECTES



DELIVERING EXCELLENCE

www.sgs-leb.com

SGS ENGINEERING AND CONTRACTING
BEIT EL CHAAR MAON ROAD - LA 400 BLDG
METN - LEBANON

Tel: + 961 4-91 60 91

Mob: +961 71 999 050

Email: info@sgs-leb.com

MEP Engineering and Contracting
Riyadh, KSA

Mob: + 966 5 3700 8826

Email: info@mep-ksa.com